

Suitable for the following building materials:

20 kg\*



71 kg\*

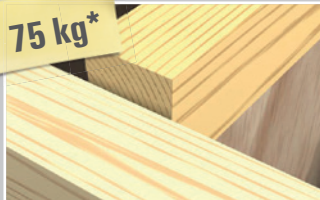


- Suitable for all panel building materials, such as:
  - Gypsum plasterboard
  - Gypsum fibreboard
  - Wooden boards
  - Steel plates
  - Plastic boards

75 kg\*



75 kg\*



- Also suitable for drill holes hitting solid materials such as:
  - Concrete
  - Wood

\* The holding values and applications are guide values and are dependent on the building material and processing type. They apply only for the maximum screw diameters.

## Functionality

**Function 1:**  
As a **toggle plug** in panel building materials



- In cavities behind panel building materials, even insulated with mineral wool ones, the DUOTEC works as a toggle plug.

**Function 2:**  
As an **expansion plug** for holes struck in solid building materials



- For drill holes hitting in solid materials such as concrete or wood, the DUOTEC can also be used as an expansion plug.

## Our 360°-Service to you.

We are available to you at any time as a reliable partner to offer technical support and advice:

- Our products range from chemical resin systems to steel anchors through to plastic plugs.
  - Competence and innovation through own research, development and production.
  - Global presence and active sales service in over 100 countries.
- For detailed information on the products and fischer group of companies visit our website at [www.fischer.de](http://www.fischer.de)



[www.fischer.de/youtube](http://www.fischer.de/youtube)



[www.fischer.de/facebook](http://www.fischer.de/facebook)



## This is what fischer stands for.



FIXING SYSTEMS



AUTOMOTIVE SYSTEMS



FISCHERTECHNIK



CONSULTING

Your fixing partner:

**fischerwerke GmbH & Co. KG**

Klaus-Fischer-Straße 1 · 72178 Waldachtal  
Germany

Tel. +49 7443 12-0 · Fax +49 7443 12-4220

[www.fischer.de](http://www.fischer.de) · [info@fischer.de](mailto:info@fischer.de)

XXXXXXXX - 04/2016 - V-MKS - Printed in Germany - Subject to technical modifications.



**fischer**  
**DUOTEC**

The installation-friendly nylon toggle fixing for high loads in gypsum plasterboard



**fischer**   
innovative solutions

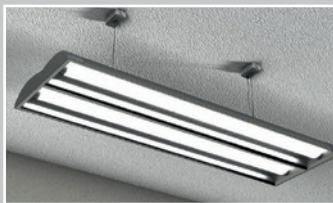
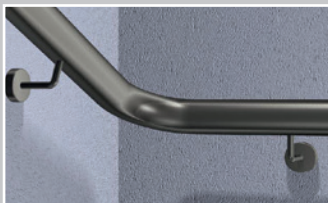
**fischer**   
innovative solutions



# DUOTEC - the intelligent combination for high loads in gypsum plasterboard

- The DUOTEC is particularly installation-friendly. A Ø10 mm drill is all that is required.
- Due to the short toggle element (39 mm), it can be used in narrow cavities (≥ 50 mm), even those insulated with mineral wool.
- The 2-component toggle element (hard/soft) and the flange sleeve made from glass-fibre reinforced plastics give it a particularly large load bearing capacity without damaging the gypsum plasterboard.
- Thanks to the flexible screw insert, it is suitable for wood- and chipboard screws or metric hooks and threaded rods.

## Application examples



Red part of the toggle element: Made from hard glass-fibre reinforced nylon. For **higher load-bearing capacity** than traditional plastic solutions.

Grey part of the toggle element: Made from soft glass-fibre reinforced nylon. For **additional load bearing capacity** and an even, "soft" load distribution preventing cutting in and thus weakening the gypsum plasterboard.

Flexible screw insert made from stainless steel. Suitable for **wood- and chipboard screws or metric hooks and threaded rods** with lock nuts.

White, glass-fibre reinforced, slidable flange sleeve. Reinforces the drill hole and enables significantly **higher shear loads**.

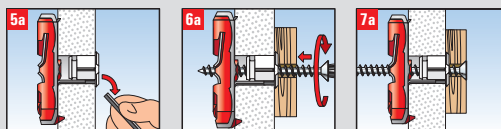
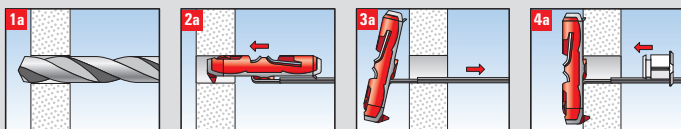
Grip strap with molded in teeth for **adjusting and presetting** of the toggle element and flange sleeve. The excess can easily be removed after installation **without using any tools**.

Curved grip, for locating **obstructions through the drill hole** (e.g. substructures, cables, pipes etc.) prior to installation in the cavity.

Anti rotation notches prevent **rotation in the drill hole**.

For more information, see: [www.fischer.de/DUOTEC](http://www.fischer.de/DUOTEC)

## Assembly: a) In panel building materials



## b) For drill holes hitting solid materials

