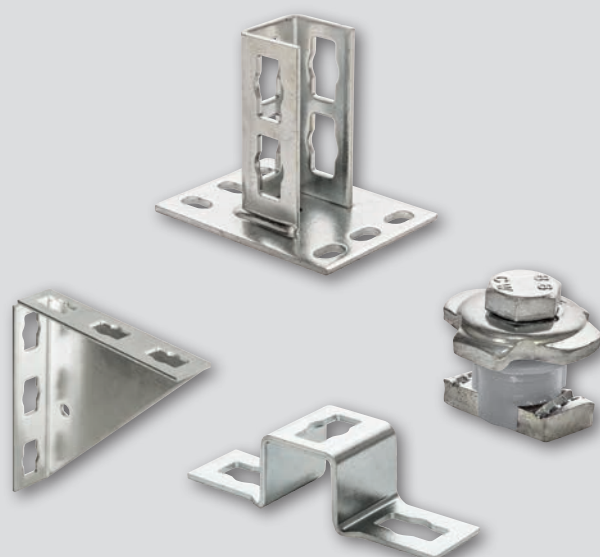




fischer FUS Push-through system

Push, turn, ready!
The clever installation

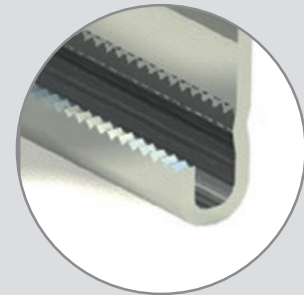


The fast and most simple connection for FUS channel systems

The high quality screw enables a **secure mounting** of the connector.

The special shaped washer holds the fixing element secure and tight in **its position**.

The springforce enables an **easy and precise positioning** of the fixing elements on the channel.



The serration of the channel and channel nut provides a form locking and due to that **extreme powerful and secure connection**.



Corrosion protection

In addition to the standard galvanized version, the range is now also available in a corrosion-resistant version:

- Special coating with exceptionally good corrosion protection against environmental influences in outdoor applications as well as in corrosive environments in indoor applications.
- Resistance according to DIN EN ISO 9227 salt spray test > 480h.
- Optimized function of the components due to optimized layer thicknesses.
- For indoor and outdoor applications and in environments with high material stress due to corrosion.
- Fits to our FUS channel system hot dip galvanized.

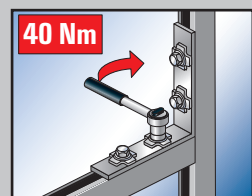
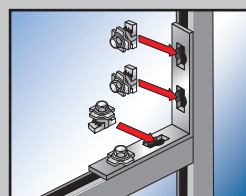
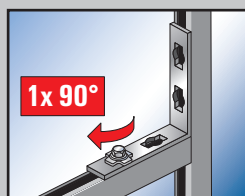
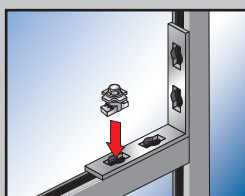
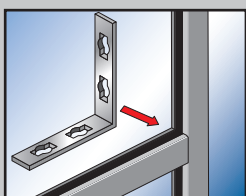
Function

- Place the construction element on the channel.
- Push the connector through the hole in the element.
Premount by turning the connector by 90°, if necessary push the connector for adjustment.
- Secure the construction by tightening of the hexagonal screw.

Your benefits at a glance

- The smart construction combines screw, washer, channel nut and spring in one unit.
- The push through connector is compatible with all FUS channels and due to that most variably applicable.
- The spring effect enables a handy positioning and adjustment of the connector.
- The form locking serration between channel and channel nut enables high shear loads and hence a secure connection.
- The comfortable push through principle saves time and assembly costs - even when dismantling.

Mounting



A most variable system: Fast and easy to assemble

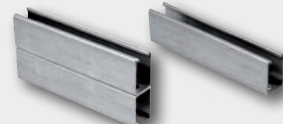
Channels



FUS 21 D / FUS 21
Channels



FUS 41 D / FUS 41
Channels



FUS 62 D / FUS 62
Channels



PFCN 41 Push-through connector



Push-through element

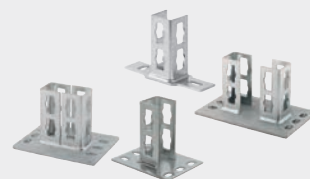
Construction elements



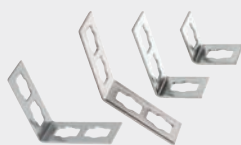
PUWS Universal bracket



PWK Angle bracket



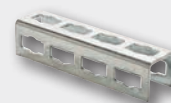
PSF Saddle flange



PFAF Bracket



PFUF Bracket



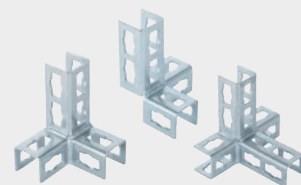
PFUF OC Channel connector



PFFF Bracket



PSAE Brace element and
PU washer



PFUF 3D and 4D Bracket




PVB Variable bracket


Range and loads

Item	Art.-No. gvz.	Art.-No. hdg.	Length [m]	Sales unit [pcs]
FUS 21/1,5 - 2 m	545117	—	2	1
FUS 21/1,5 - 3 m	545118	545128	3	1
FUS 21/1,5 - 6 m	545119	—	6	1
FUS 21/2,0 - 2 m	40391	—	2	1
FUS 21/2,0 - 3 m	97660	537653	3	1
FUS 21/2,0 - 6 m	97661	—	6	1
FUS 21/2,5 - 2 m	92867	—	2	1
FUS 21/2,5 - 3 m	77349	—	3	1
FUS 21/2,5 - 6 m	77541	—	6	1
FUS 41/1,5 - 2 m	545120	—	2	1
FUS 41/1,5 - 3 m	545126	545129	3	1
FUS 41/1,5 - 6 m	545127	—	6	1

Item	Art.-No. gvz.	Art.-No. hdg.	Length [m]	Sales unit [pcs]
FUS 41/2,0 - 2 m	40390	—	2	1
FUS 41/2,0 - 3 m	97658	517426	3	1
FUS 41/2,0 - 6 m	97659	537656	6	1
FUS 41/2,5 - 2 m	92295	—	2	1
FUS 41/2,5 - 3 m	77347	537658	3	1
FUS 41/2,5 - 6 m	77537	517427	6	1
FUS 62/2,5 - 6 m	504457	517428	6	1
FUS 21D/2,0 - 3 m	504458	537659	3	1
FUS 21D/2,0 - 6 m	535531	537661	6	1
FUS 41D/2,5 - 6 m	504459	537662	6	1
FUS 62D/2,5 - 6 m	504460	537663	6	1



Item	Art.-No. gvz.	Art.-No. zl.	VE [St]
PFCN 41 Push-through connector	533739	542733	50
PUWS 2x2/135° Universal bracket	533731	542708	10
PUWS 2x2 Universal bracket	533733	542709	10
PUWS 4x4 Universal bracket	533734	542710	8
PFAF 2 Bracket	533735	542711	25
PFAF 3 Bracket	533736	542712	25
PFAF 4 Mounting bracket	535267	542724	25
PFAF 4/135 Bracket	533737	542713	20
PSFQ 41 Saddle flange across	535266	542723	10
PSF 41 Saddle flange	533740	542715	10
PSF 82 Saddle flange	533741	542716	5
PSF 124 Saddle flange	533742	542718	5
PWK 200/200 Angle bracket	533744	542720	15



Item	Art.-No. gvz.	Art.-No. zl.	VE [St]
PFFF 2L Bracket	533745	542721	20
PFFF 4L Bracket	535268	542725	25
PVB Variable bracket	534960	542722	5
PSAE 300 Brace element	535269	542726	10
PSAE 500 Brace element	535270	542727	10
PU 10,5 Washer	535271	542728	50
PU 12,5 Washer	535272	542729	50
PFUF 41 Bracket	533738	542714	25
PFUF OC Channel connector	533743	542719	6
PFUF 3DL Bracket	535273	542730	10
PFUF 3DR Bracket	535274	542731	10
PFUF 4D Bracket	535275	542732	10

Item	Art.-No.	Max. recommen- ded tension load for FUS 1,5 mm [kN]	Max. recommen- ded tension load for FUS 2,0mm N _{empl} [kN]	Max. recommen- ded tension load for FUS 2,5mm N _{empl} [kN]	Max. recommen- ded shear load for FUS 1,5 mm [kN]	Max. recommen- ded shear load for FUS 2,0 mm [kN]	Max. recommen- ded shear load for FUS 2,5 mm [kN]	Tightening torque for screw grade ≥ 8.8 T _{inst} [Nm]
PFCN 41	533739	4,0	5,0	7,0	3,5	4,0	4,0	40

Note: Load values are based on the PFCN 41 push-through connector.

Applications

Push-through installation

Installation duct pipelines



- Simple and stiff frame constructions with FUS-channels and angle brackets.

e. g. angle bracket PWK

Installation shaft pipelines



- Flexible and stiff frame constructions with universal brackets.

e. g. construction element PFUF 3D

Substructure for solar panels



- Substructure for solar panels, outdoor. Suitable for zl components and FUS hdg channels.

e. g. PVB variable bracket

Horizontal installation



- Simple horizontal constructions in corridors with saddle flanges.

e. g. saddle flange PSF

Installation grid



- Secure connection of channels for installation grids with channel connectors.

e. g. channel connector PFUF OC

Cantilever for pipes



- Flexible cantilever constructions for pipe lines with flat angle brackets.

e. g. bracket PFAF

Sub frame construction for pipes



- Simple and secure cross connection with hat connector.

e. g. bracket PFUF

Massiv bracing of cantilever arm



- Variable angular positioning of profile support with the variable bracket.

e.g. variable bracket PVB

fischer FIXPERIENCE

The design and information software suite



- The modular design program includes engineering software and application modules.
- The software is based on international design standards (ETAG 001, EC1, EC2, EC3 and EC5), including the national application documents. All common force and measurement units are available.
- Incorrect input will be recognized and the software gives tips to get a correct result. This ensures a safe and reliable design every time.
- The graphical display can easily be rotated through 360°, panned, tilted or zoomed as required.
- The 3D display gives a detailed and realistic image.
- The "live update" feature helps to keep the program up to date ensuring you are always working with the latest version.
- Free download and updates at www.fischer.de/fixperience-en

Our service to you



We are available to you at any time as a reliable partner to offer technical support and advice:

- Our products range from chemical resin systems to steel anchors through to nylon anchors.
- Competence and innovation through own research, development and production.
- Global presence and active sales service in over 100 countries.
- Qualified technical consulting for economical and compliant fastening solutions. Also on-site at the construction site if requested.
- Training sessions, some with accreditation, at your premises or at the fischer academy.
- Design and construction software for demanding applications.

This is what fischer stands for



FIXING SYSTEMS



AUTOMOTIVE SYSTEMS



FISCHERTECHNIK



CONSULTING



LNT AUTOMATION

See the extensive main catalogue or visit our website at www.fischer-international.com for information about the complete fischer range