

Dealer:

[www.fischer-international.com](http://www.fischer-international.com)



**fischer stands for**

Fixing Systems  
Automotive  
fischertechnik  
Consulting  
LNT Automation

---

fischerwerke GmbH & Co. KG  
Klaus-Fischer-Straße 1 · 72178 Waldachtal  
Germany  
T +49 7443 12 - 0  
[www.fischer-international.com](http://www.fischer-international.com) · [info@fischer.de](mailto:info@fischer.de)

---

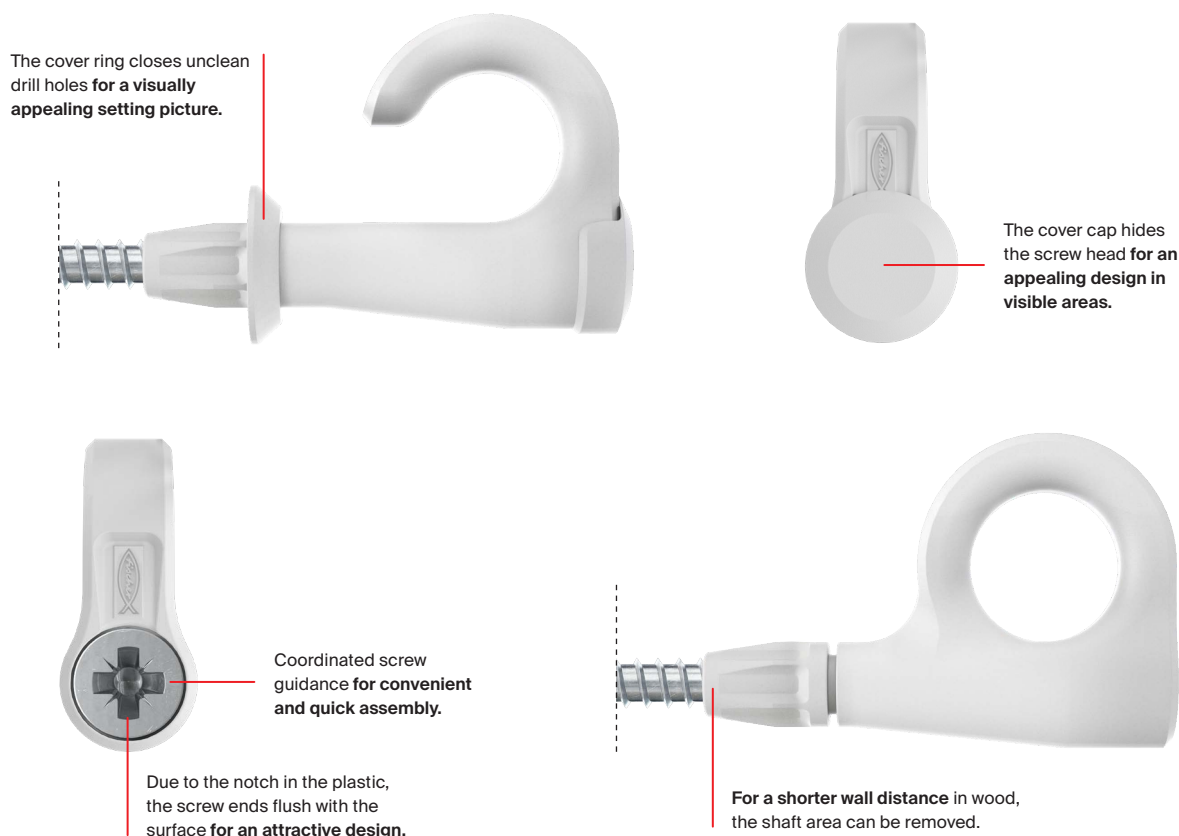
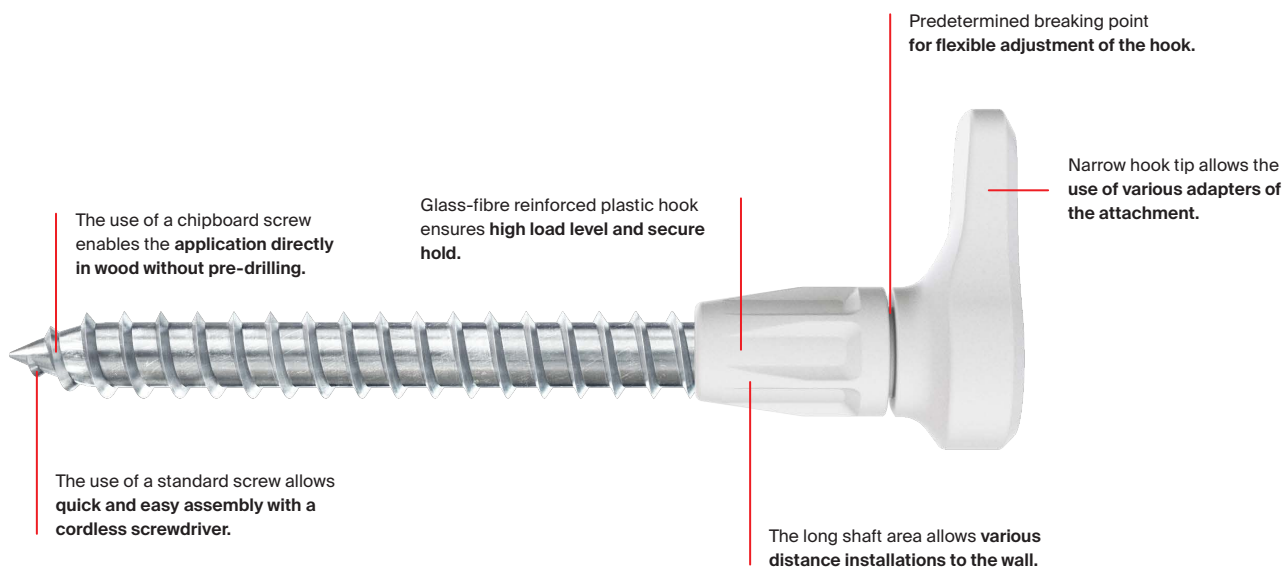
**fischer** 

**EasyHook.**  
Turn screws into  
hooks.



# EasyHook.

## Turn screws into hooks.



# Advantages and functions

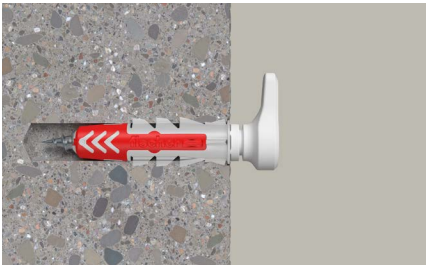
## Your advantages at a glance

- The attachable hook is installed quickly and easily using a cordless screwdriver.
- Due to the predetermined breaking point, the hook can be positioned optimally.
- The EasyHook can be installed at different distances from the wall depending on the screw-in depth.
- The glass-fibre reinforced plastic ensures a high load level and secure hold.
- The use of the cover ring and cap ensures a visually appealing design of the EasyHook Round and Loop.
- The EasyHook can be used with the DuoPower, the DuoBlade or without plugs in wood, covering a wide range of substrates.

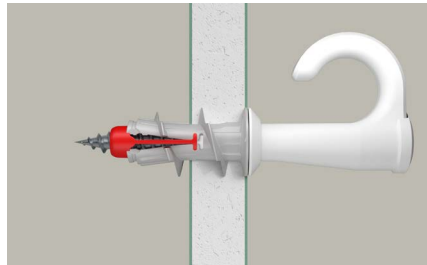
## Functioning

- For easier installation in wood, the shaft area of the eye and round hook can be broken off.
- The screw is inserted through the EasyHook and screwed in with a cordless screwdriver without holding the hook.
- By turning the hook to the left, it is released at the predetermined breaking point. This allows the EasyHook to be aligned and tightened as required.
- Depending on the depth of the screw, the distance to the wall can be adjusted.
- The cover cap of the EasyHook Round and Loop is placed on the screw head from behind.
- If needed, the hook can be easily removed with a cordless screwdriver or screwdriver.

## Installation



In solid brick, the EasyHook achieves its highest load values.



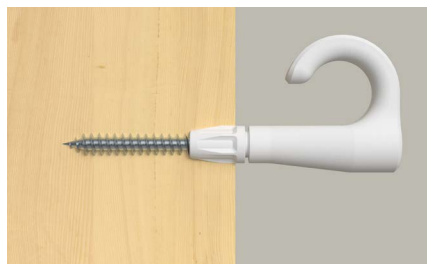
For applications in gypsum board, we recommend to use the plasterboard fixing DuoBlade.



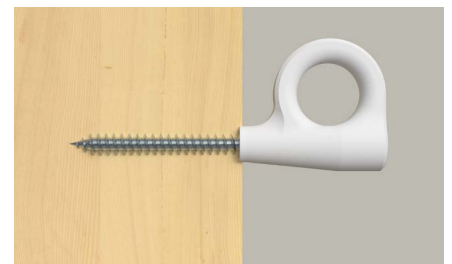
In combination with the DuoPower, the EasyHook is also suitable for perforated bricks.



Due to the included chipboard screw, there is no need to pre-drill in wood.



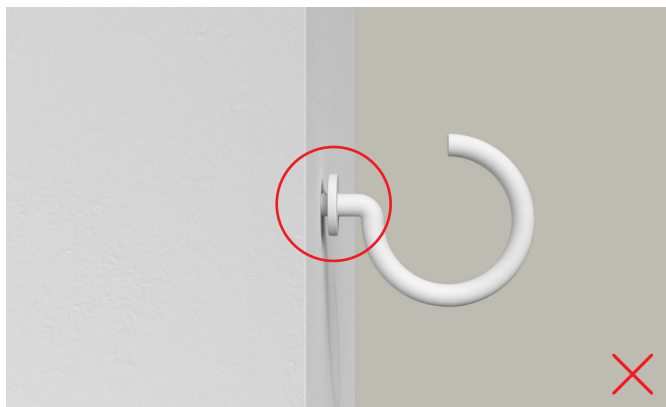
To achieve a larger hook opening, we recommend mounting with the shank cone.



To achieve a smaller wall distance, you can use the hook without the shaft cone. To do this, simply break off the front part by hand.



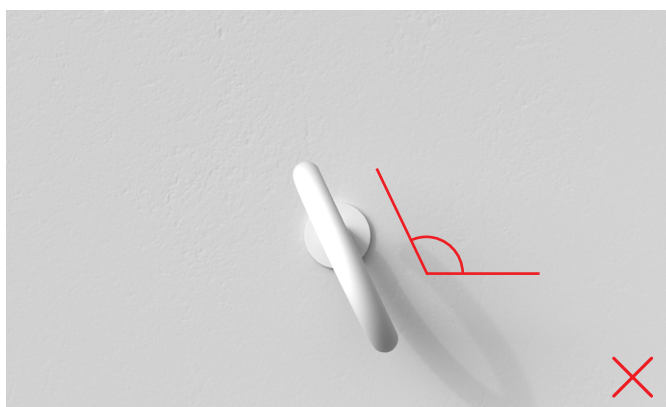
# EasyHook vs. steel hook.



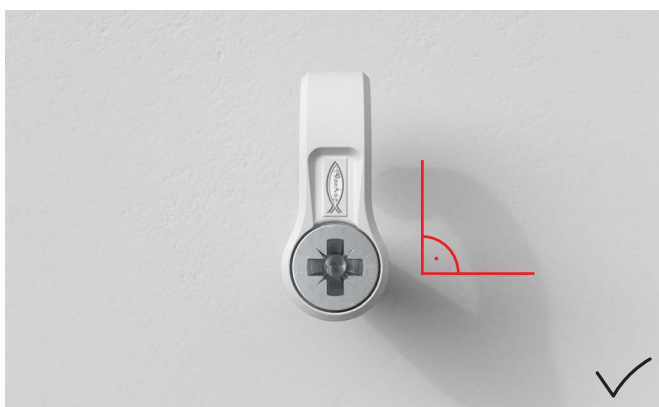
If you want to align the steel hook vertically, the plate is sometimes not flush with the wall.



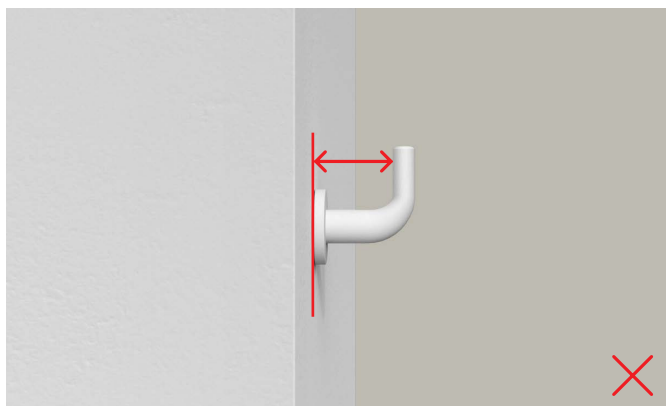
No matter how the EasyHook is aligned, it can always be mounted flush with the wall.



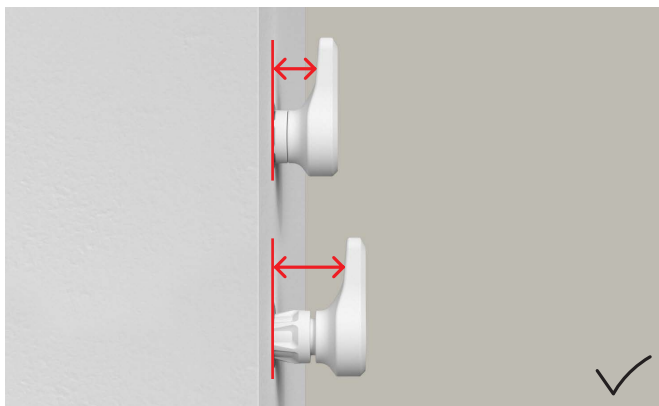
The hook sometimes fits at an angle because it can no longer be screwed in further due to the plate.



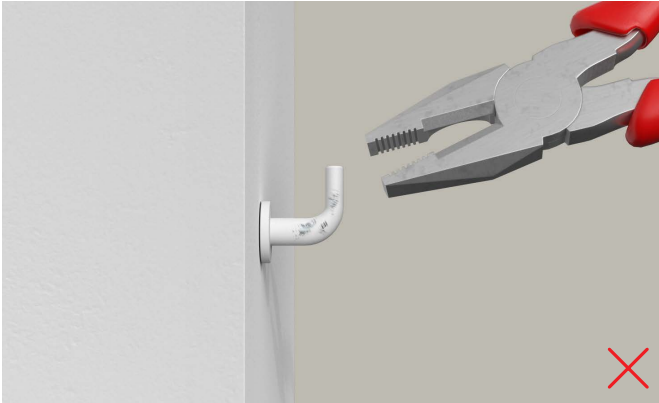
The EasyHook can be aligned flexibly around its own axis and always be positioned as desired.



Due to the plate, the distance from the wall to the hook is fixed.



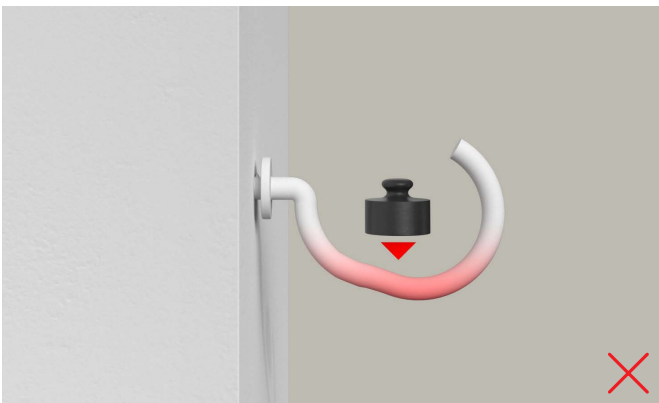
By screwing in further, the EasyHook can be mounted with different distances to the wall.



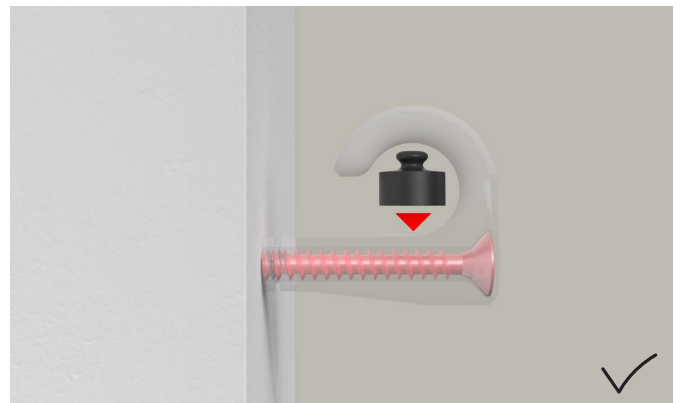
Mounting conventional steel hooks using pliers can be very difficult. It is easy to slip and scratch the hook.



The EasyHook can easily be screwed in with a screwdriver or even a cordless screwdriver.



Steel hooks with a small material diameter deform more quickly and can no longer carry the full load.

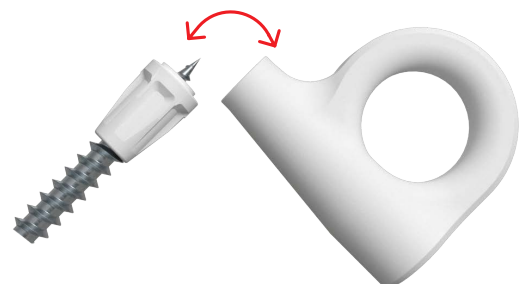


In addition to the glas-fibred plastic of the EasyHook, the screw also carries a part of the load. Therefore the hook remains stable for a longer time.



#### Tip

To break off the shank cone for application in wood, simply insert the screw tip into the cone and push down.



# Installation in a variety of building materials.

## Recommendations with the Duopower

Suitable for building materials, e.g.:



Uncracked concrete



Solid brick



Perforated brick



Aerated concrete



Gypsum plasterboard  
and gypsum fibreboards

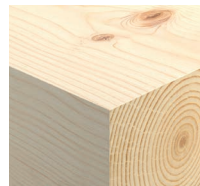
## Recommendations with the DuoBlade



Gypsum plasterboard



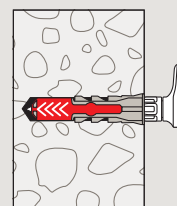
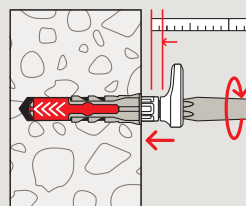
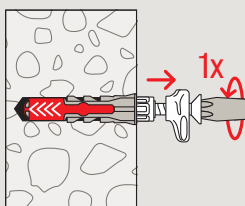
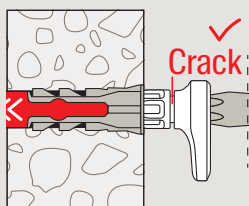
Gypsum fibreboard



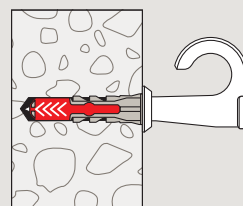
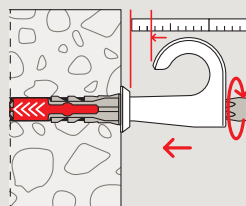
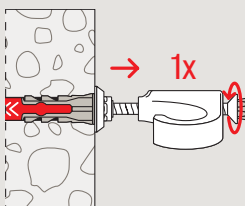
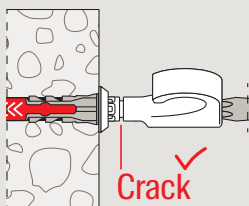
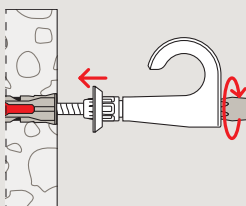
Wood

## Recommendation without plug

### EasyHook Angle



### EasyHook Round & Loop

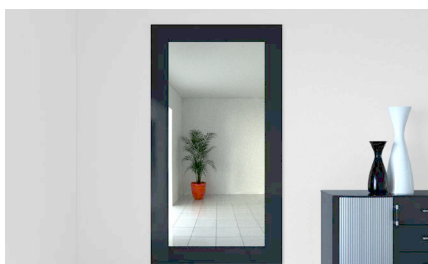




EasyHook Angle



Pictures



Mirrors



Shelves





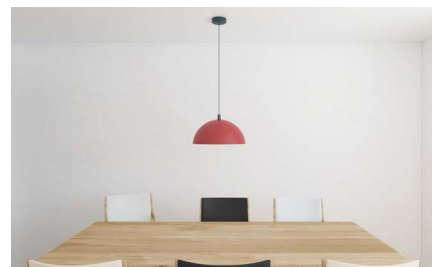
**EasyHook Round**



Hanging baskets



Hanging signs



Lamps



**EasyHook Loop**



Hanging baskets

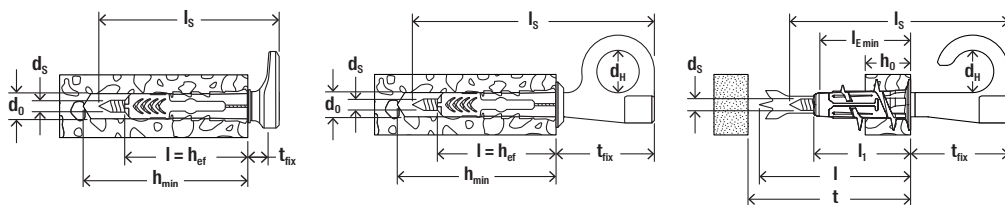


Protection wall



Clotheslines

# Assortment



## EasyHook Assortment



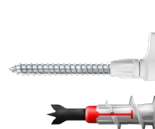
EasyHook Angle DuoPower



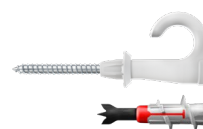
EasyHook Round DuoPower



EasyHook Loop DuoPower



EasyHook Angle DuoBlade



EasyHook Round DuoBlade

Item	Art.-No.	Drill-diameter $d_o$ [mm]	Minimum Drill hole depth $h_{min}$ [mm]	Minimum Board thickness [mm]	Minimum drill hole depth [mm]	Plug length $l = h_{eff}$ [mm]	Plug screw $d_s \times l_s$ [mm]	Diameter hook hole $d_H$ [mm]	Drive	Wall distance $t_{fix}$ [mm]	Content Blister
EasyHook Angle DuoPower 5x25	557915	5	35	12.5	29	25	3.5 x 40	–	PZ 2	3.5 - 7.5 <sup>1)</sup>	8
EasyHook Angle DuoPower 6x30	557916	6	40	12.5	35	30	4.0 x 50	–	PZ 2	4.0 - 9.0 <sup>1)</sup>	6
EasyHook Angle DuoPower 8x40	557917	8	50	12.5	46	40	5.0 x 60	–	PZ 2	5.5 - 11.5 <sup>1)</sup>	4
EasyHook Angle DuoPower 10x50	557918	10	70	12.5	58	50	6.0 x 80	–	PZ 3	7.0 - 13.0 <sup>1)</sup>	2
EasyHook Round DuoPower 6x30	557923	6	40	12.5	35	30	4.0 x 70	11	PZ 2	24 - 28	6
EasyHook Round DuoPower 8x40	557924	8	50	12.5	46	40	5.0 x 80	14	PZ 2	30 - 35	4
EasyHook Loop DuoPower 6x30	557926	6	40	12.5	35	30	4.0 x 70	11	PZ 2	24 - 28	6
EasyHook Loop DuoPower 8x40	557927	8	50	12.5	46	40	5.0 x 80	14	PZ 2	30 - 35	4
EasyHook Angle DuoBlade	557919	–	–	9.5	28	44	4.0 x 50	–	PZ 2	4.0 - 9.0	6
EasyHook Round DuoBlade	557920	–	–	9.5	28	44	4.0 x 70	–	PZ 2	24 - 28	6

<sup>1)</sup> Wall to inside hook.



# Loads

## EasyHook in combination with DuoPower

Recommended loads<sup>1)</sup> for a single anchor.

Type		Angle 5		Angle 6		Angle 8		Angle 10	
Screw diameter	[mm]	3.5	3.5	4.0	4.0	5.0	5.0	6.0	6.0
DuoPower plug	[mm]	5 x 25	5 x 25	6 x 30	6 x 30	8 x 40	8 x 40	10 x 50	10 x 50
Recommended loads in the respective base material		$V_{rec}^{2)}$	$F_{rec,45^\circ}^{3)}$	$V_{rec}^{2)}$	$F_{rec,45^\circ}^{3)}$	$V_{rec}^{2)}$	$F_{rec,45^\circ}^{3)}$	$V_{rec}^{2)}$	$F_{rec,45^\circ}^{3)}$
Concrete	$\geq C20/25$	[kg]	25	8	30	9	80	20	90
Vertically perforated brick	$\geq H12$ ( $\rho \geq 0.9 \text{ kg/dm}^3$ )	[kg]	25	8	30	9	35	15	40
Aerated concrete	$\geq PB2, PP2$	[kg]	6	5	11	6	15	13	20
Gypsum plasterboard	12.5 mm	[kg]	6	5	13	6	18	8	20

<sup>1)</sup> Required safety factors are considered. Load values are valid for using the supplied screw.

<sup>2)</sup> Recommended shear load. Load 90° to the screw axis.

<sup>3)</sup> Recommended inclined tensile load. Load at an angle of 45° to 89° to the screw axis.

## EasyHook Round and Loop in combination with DuoPower

Recommended loads<sup>1)</sup> for a single anchor.

Type		Round 6		Round 8		Loop 6		Loop 8	
Screw diameter	[mm]	4.0	4.0	5.0	5.0	4.0	4.0	5.0	5.0
DuoPower plug	[mm]	6 x 30	6 x 30	8 x 40	8 x 40	6 x 30	6 x 30	8 x 40	8 x 40
Recommended tension ( $N_{rec}$ ) or shear loads ( $V_{rec}$ )		$N_{rec}$	$V_{rec}$	$N_{rec}$	$V_{rec}$	$N_{rec}$	$V_{rec}$	$N_{rec}$	$V_{empt}$
Concrete	$\geq C20/25$	[kg]	12	5	23	10	34	13	60
Vertically perforated brick	$\geq H12$ ( $\rho \geq 0.9 \text{ kg/dm}^3$ )	[kg]	12	4	19	10	34	13	38
Aerated concrete	$\geq PB2, PP2$	[kg]	8	4	7	6	8	6	8
Gypsum plasterboard	12.5 mm	[kg]	7	5	8	5	7	10	8

<sup>1)</sup> Required safety factors are considered. Load values are valid for using the supplied screw.

## EasyHook Angle and Round in combination with DuoBlade

Recommended loads<sup>1)</sup> for a single anchor.

Type		Round 6		Angle 6	
Recommended tension ( $N_{rec}$ ) or shear loads ( $V_{rec}$ )		$N_{rec}$	$V_{rec}$	$N_{rec}$	$V_{rec}$
Screw diameter	[mm]	4	4	4	4
Minimum drill hole depth	[mm]	28	28	28	28
Minimum drill hole depth for pre-assembly	[mm]	50	50	50	50
Recommended loads in the respective base material <sup>2)</sup>					
Gypsum plasterboard	12,5 mm	[kg]	7	5	6

<sup>1)</sup> Required safety factors are considered. Load values are valid for using the supplied screw.

<sup>2)</sup> Load data for tension or shear loads.