

# Façade construction for ceramic cladding.





# Basic information for ceramics.

When it comes to façade cladding it is about the outer appearance of the cladding which gives the building a stand-alone look. Furthermore, it is important to guarantee the aesthetics of the building for years to come. Both are equal prerequisites and optimally fulfilled by ceramics.

Ceramic tiles are artificial materials, which are industrially manufactured based on natural products. That is why there is a very wide range of various colours and surface textures. Based on the industrial production of the ceramic tiles, the only limit in the sizes are the production machines. A wide range of sizes and thicknesses are available.

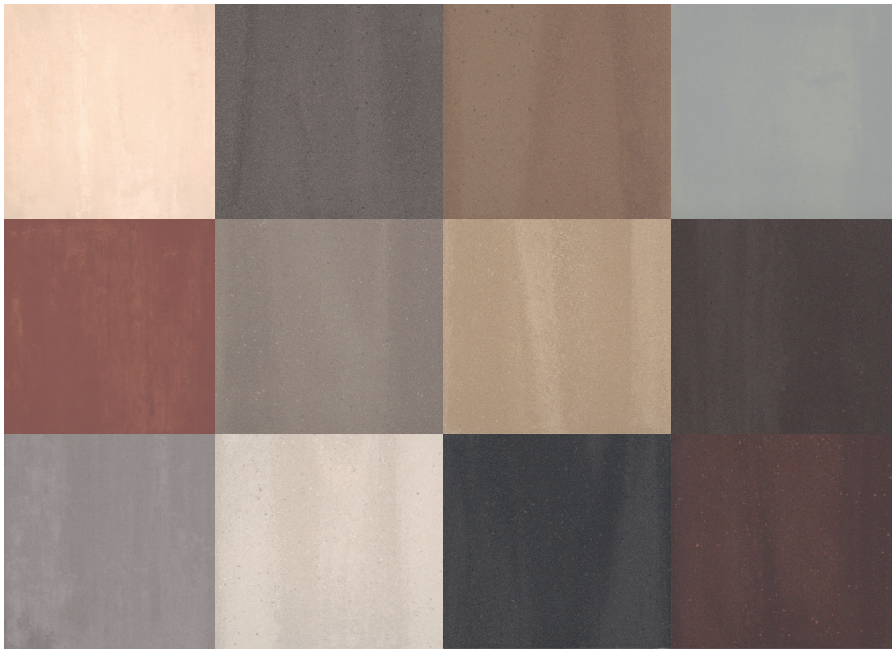
Tiles made out of ceramics are very hard, durable, non-combustible, weather and UV-resistant. These

advantages offer a low level of maintenance which provides a great benefit for the usage of ceramic tiles in rainscreen façades.

Façade panel thicknesses range from 8 mm to 20 mm. Common fixing methods are with coloured supporting clamps for exposed fixing and undercut anchors for concealed fixing.

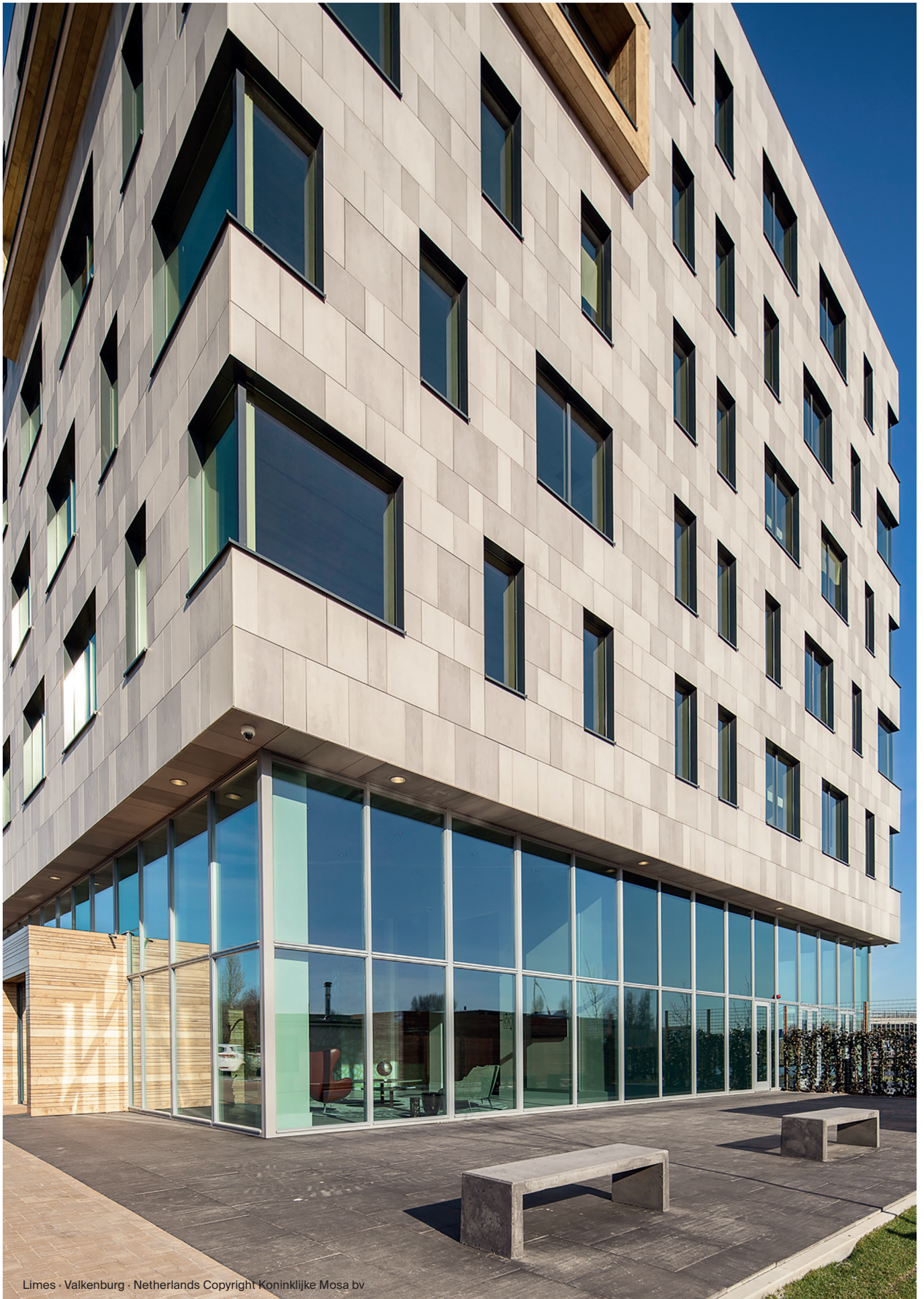
The medium-weight panels enable many possibilities in design, e.g. floor-to-floor spanning subframes or wide wall distances to cover thick insulations which are required on energy efficient buildings.

Backed with 35 years' experience fischer supports in material testing to evaluate design resistances.



Various ceramic manufactures provide a great variety of properties and colours of ceramic tiles to the worldwide market. Despite all differences, they have one thing in common - they can be installed with fischer products.





Limes · Valkenburg · Netherlands Copyright Koninklijke Mosa bv

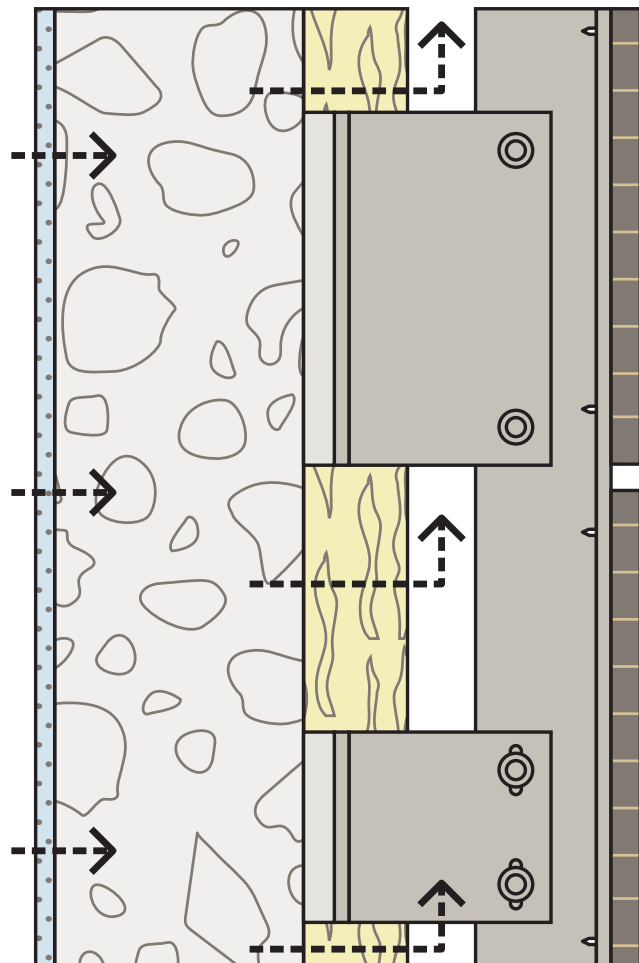
# Functional principle rainscreen façades.

A rainscreen façade is a ventilated double-layer cladding system which structurally separates the weather protection and insulation functions. Based on many advantages compared to sealed façade systems rainscreen systems have become very popular nowadays. Besides the aesthetic advantages there are in addition functional and safety benefits, which include the rear ventilation cavity and non-combustible insulation materials. These systems are less susceptible to damage than other façade systems and provide a wide freedom of design. In addition, fire, noise and lightning protection requirements can be implemented.

fischer offers innovative, high-quality full façade systems for rainscreen façades. Besides functional and economical advantages, the fischer façade systems provide especially an outstanding architectural creative scope.

**fischer goes beyond the state of the art by offering the following benefits:**

- Subframe systems for all different cladding materials
- Flexible system for concealed and exposed applications
- Fast and uncomplicated installation reduces costs for the whole façade
- Complies with low and zero energy building standards
- Project-specific training, consultation and product solutions
- Global support by local representatives
- Experienced in façade systems for 35 years
- Complete façade system supplied out of one hand
- ETA and CE approved



Functional principle rainscreen façade with system components



# The appearance they deserve with the fischer undercut technology.

## Ceramic cladding

The fischer Zykon Panel Anchor FZP II allows a concealed fixing of ceramic tiles for rainscreen façades. The fitting drill hole is created by a conical undercut in a cylindrical hole. The harmonized geometry of the installed undercut anchor and the drill hole create a stress-free fixing. Only the impact of external forces causes internal reaction forces in the connection of the undercut anchor and ceramic panels.

Similar to the undercut anchor, just as much know-how goes into the other components of the fischer façade system. The drilling techniques, quality assurance of drill holes and installation methods integrate the system perfectly.

With this complete system for undercut anchors, fischer offers architects and planners an innovative, high-quality solution for rainscreen façades. In addition to processing and economic advantages, the fischer façade system with undercut anchors provides an outstanding freedom of architectural design.



## Benefits



On-site support



Technology leadership beyond the state-of-the-art



Cost efficiency of the overall system with fischer quality



Fast supply and installation of the system

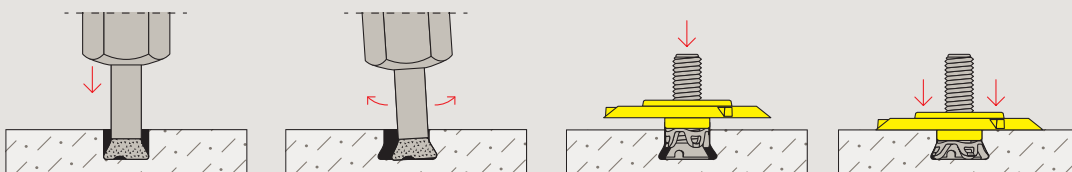


Global availability and supply of a complete system from a single source



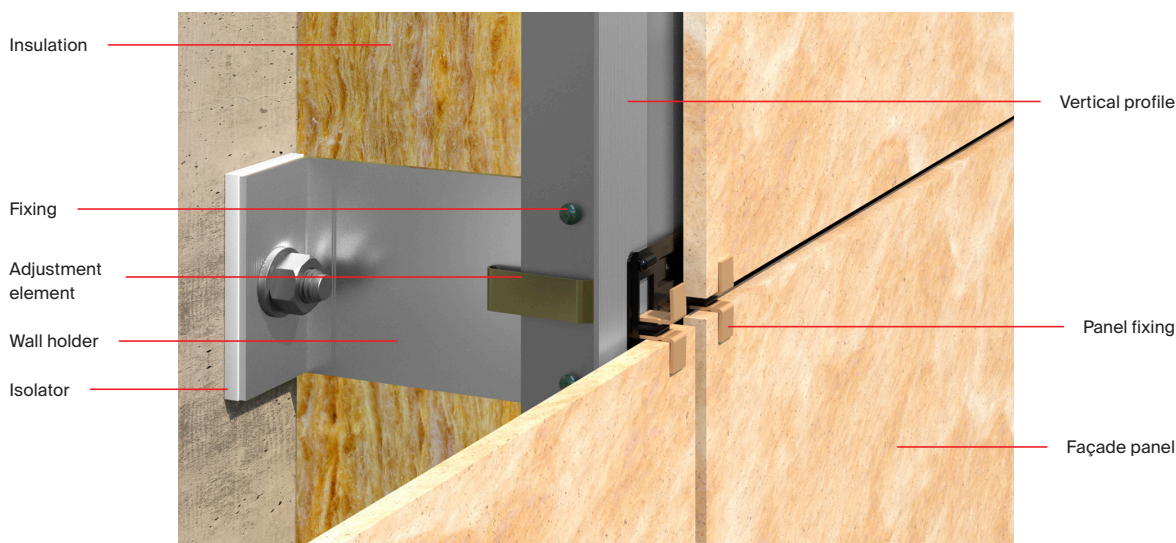
Approved and third-party certified systems and in-house test laboratory

## Installation



# Subframe system for exposed fixing of ceramic cladding.

## Exposed system



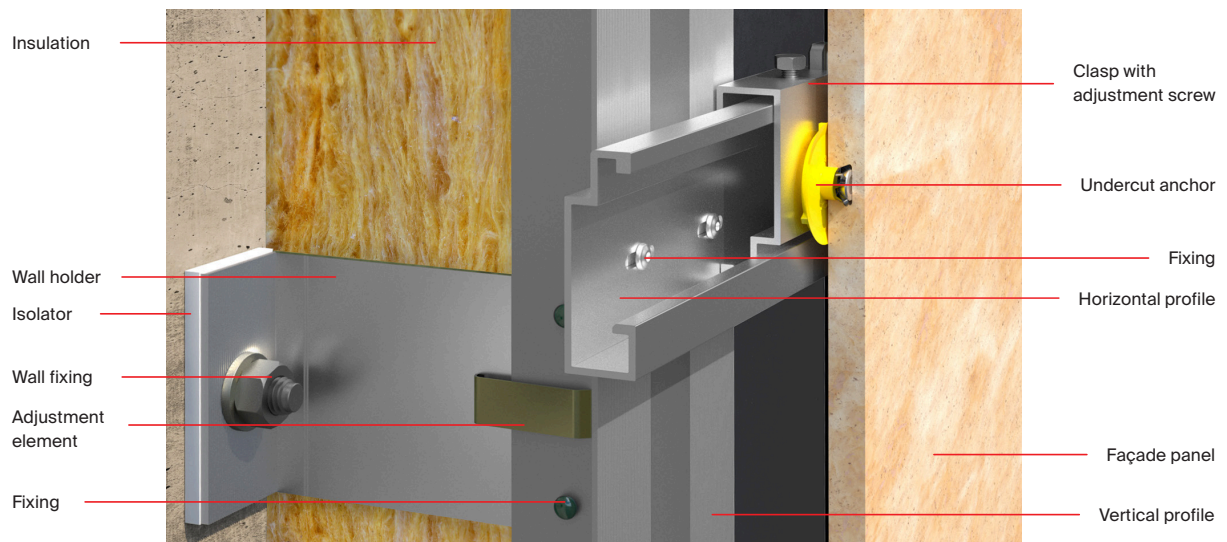
## Technical data

Exposed system			
Product type	Product description	Item No.	Annotation
Isolator	Thermostop 40x150x6/11	546156	For fix points
Isolator	Thermostop 40x80x6/11	540741	For sliding points
Wall holder	FLH 160x150x3/11/F-SP AL	548107	Fix point holder
Wall holder	FLH 160x80x3/11/SP AL	548105	Sliding point holder
Wall fixing	FAZ II 10/10 A4	501403	Bolt anchor for concrete
Wall fixing	SXRL 10 x 80 FUS	522730	Frame fixing for masonry
Adjustment element	Helping Hand clip	547170	-
Vertical profile	T-Profile 100/52/2 black	548287	Aluminum profile, 6m
Fixing	Special Rivet SNA 5 x 12 K14	545591	-
Panel fixing	Grooved clamp ATK 100 KL	Request	Colour coated
Panel fixing	Special Rivet SNA 3,2 x 8	548258	Colour coated
Panel fixing	EPDM gasket	546221	Colour coated

Typical items for a subframe systems as depicted. For more items, specific information and quotations we kindly ask you to refer to: [facades@fischer.de](mailto:facades@fischer.de) or [www.fischer-international.com/fischer-facade-systems](http://www.fischer-international.com/fischer-facade-systems)

# Subframe system for concealed fixing of ceramic cladding.

## Concealed system



## Technical data

Concealed system			
Product type	Product description	Item No.	Annotation
Isolator	Thermostop 40x150x6/11	546156	For fix points
Isolator	Thermostop 40x80x6/11	540741	For sliding points
Wall holder	FLH 140x150x3/11/F-SP AL	548089	Fix point holder
Wall holder	FLH 140x80x3/11/SP AL	548087	Sliding point holder
Wall fixing	FAZ II 10/10 A4	501403	Bolt anchor for concrete
Wall fixing	SXRL 10 x 80 FUS	522730	Frame fixing for masonry
Adjustment element	Helping Hand clip	547170	-
Vertical profile	T-Profile 100/52/2	548275	Aluminum profile, 6m
Fixing	Special Rivet SNA 5 x 12 K14	545591	-
Horizontal profile	H-Profil ATK103S-20/ t=2mm	545584	Aluminum profile, 6m
Clasps	ATK103 S20, t2, B60, D6,5 adjustable	547532	Including fix point locking
Clasps	ATK103 S20, t2, B36, D6,5 rigid	545579	For sliding points
Undercut anchor	FZP II 11x6 M6/T/9 D40 PA	532644	For textured backfaces
Undercut anchor	FZP II 11x6 M6/T/10 PA	520365	For smooth backfaces

Typical items for a subframe systems as depicted. For more items, specific information and quotations we kindly ask you to refer to: [facades@fischer.de](mailto:facades@fischer.de) or [www.fischer-international.com/fischer-facade-systems](http://www.fischer-international.com/fischer-facade-systems)

[www.fischer-international.com](http://www.fischer-international.com)



**fischer stands for**

Fixing Systems  
Automotive  
fischertechnik  
Consulting  
LNT Automation

---

**fischerwerke GmbH & Co. KG**  
Klaus-Fischer-Straße 1 · 72178 Waldachtal  
Germany  
[www.fischer-international.com](http://www.fischer-international.com) · [facades@fischer.de](mailto:facades@fischer.de)

---